

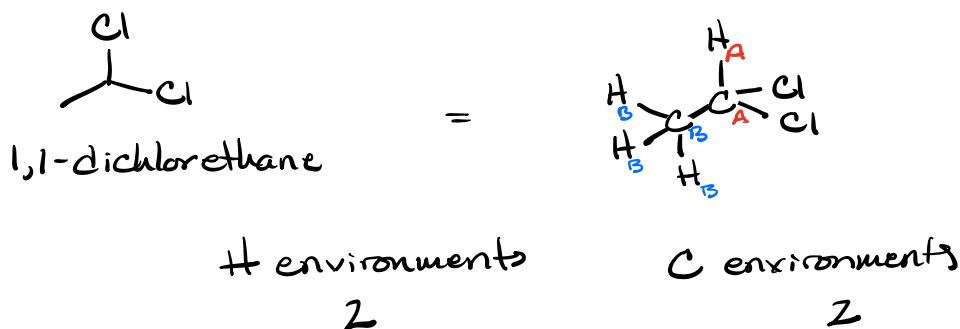
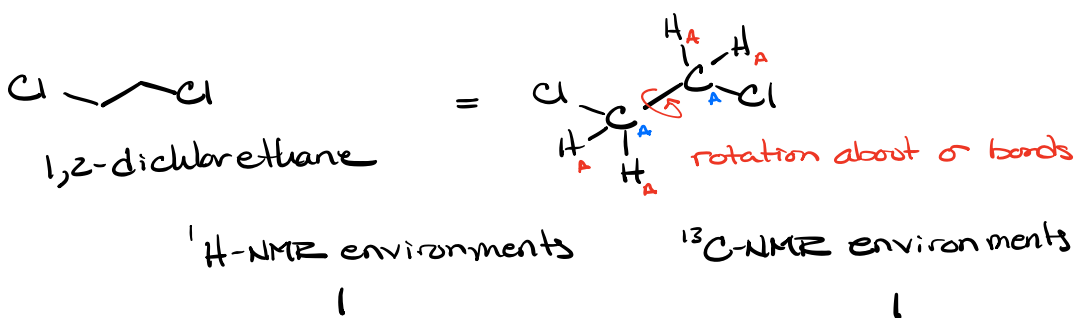
## Chemical Equivalents

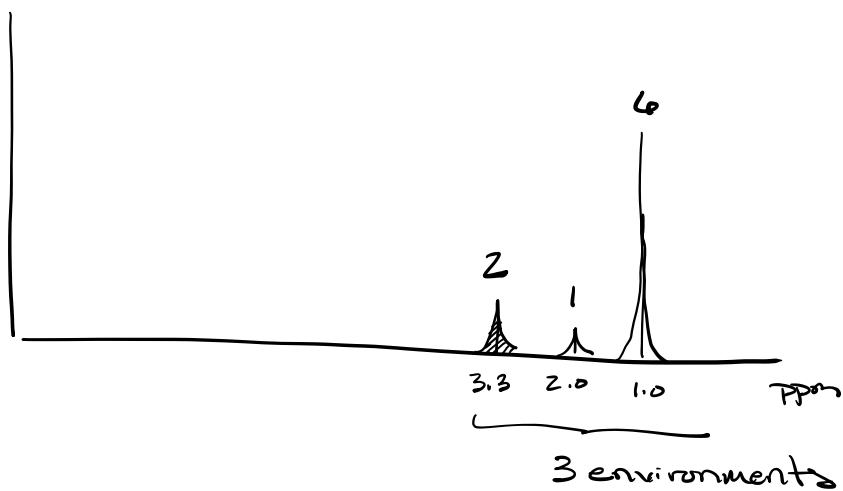
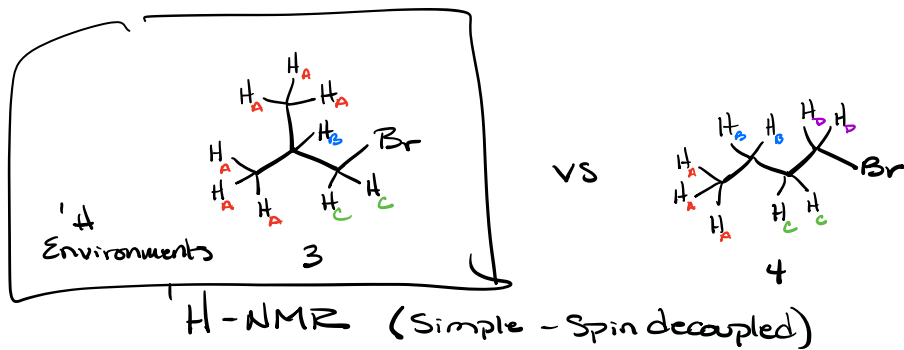
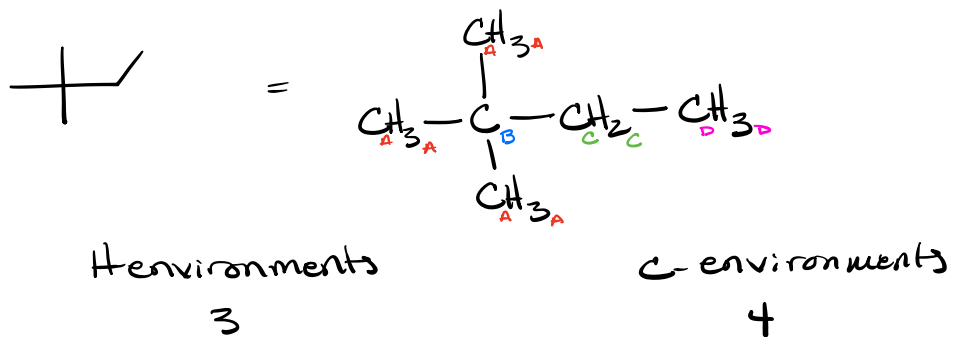
How many unique chemical environments there are in a molecule

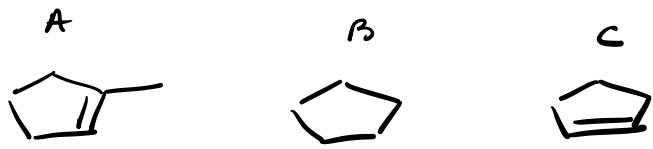
Both for proton & carbon

## Symmetry

### Examples

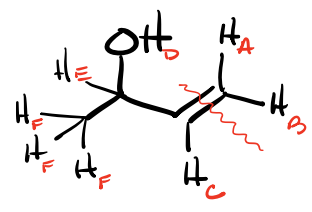
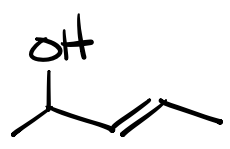
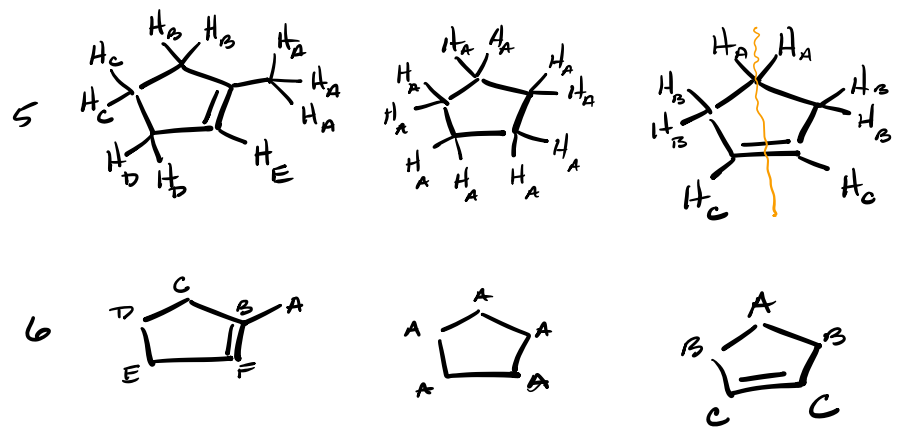




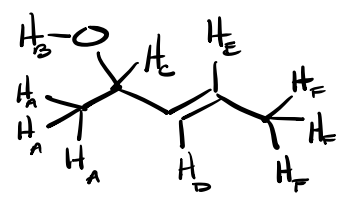


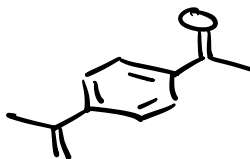
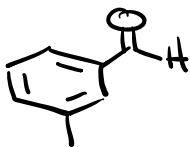
How many

<sup>1</sup> H environments	5	1	3
<sup>13</sup> C environments	6	1	3



H environments	6	6
C environments	5	4





# environments

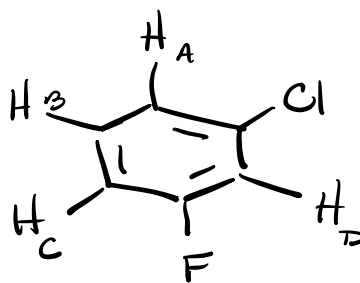
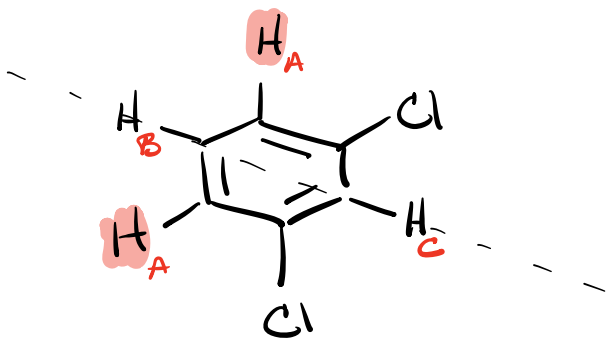
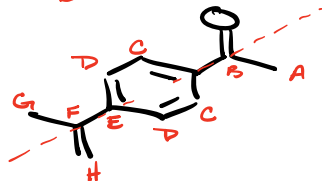
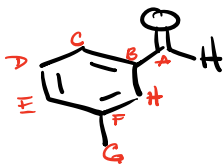
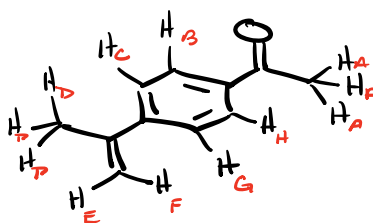
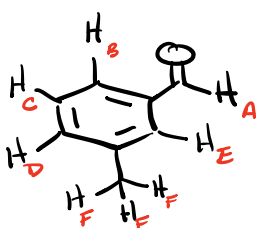
6

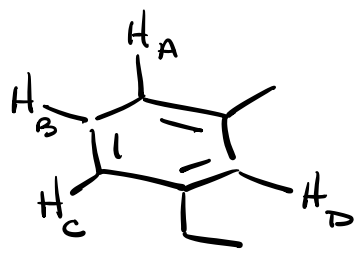
8

C environments

8

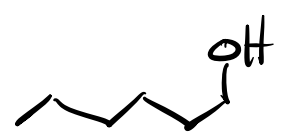
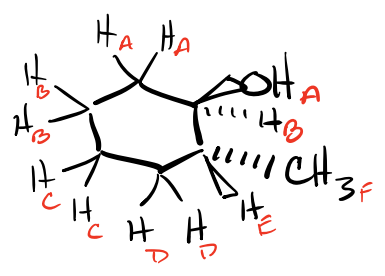
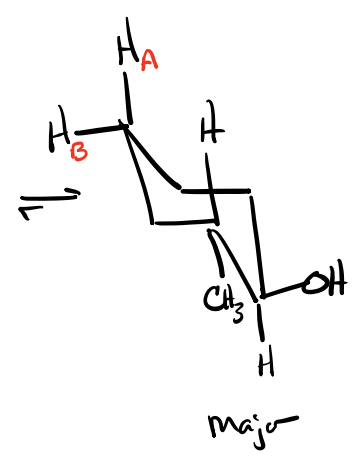
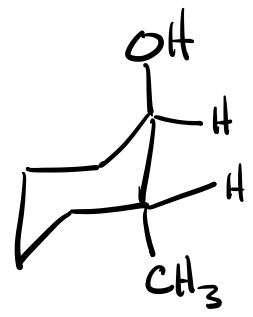
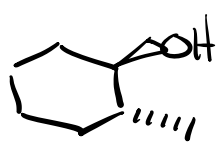
8

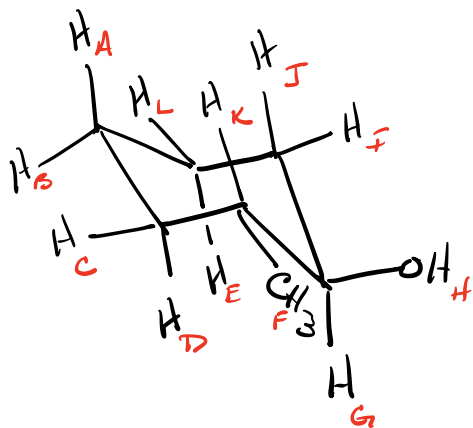




Environments

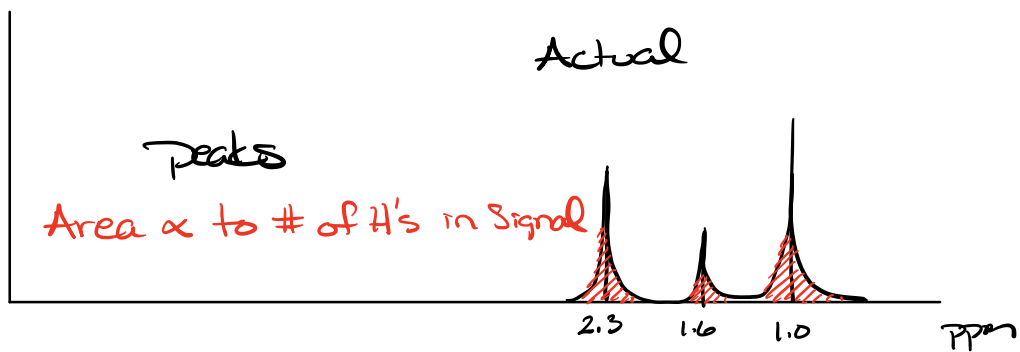
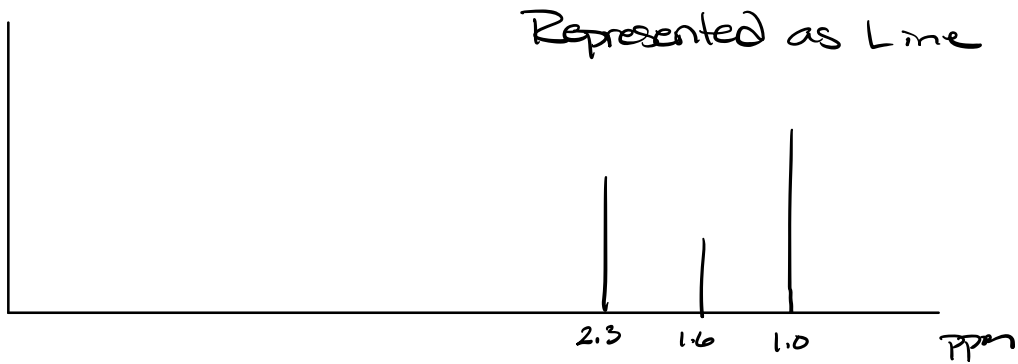
<sup>1</sup> H	8
<sup>13</sup> C	4





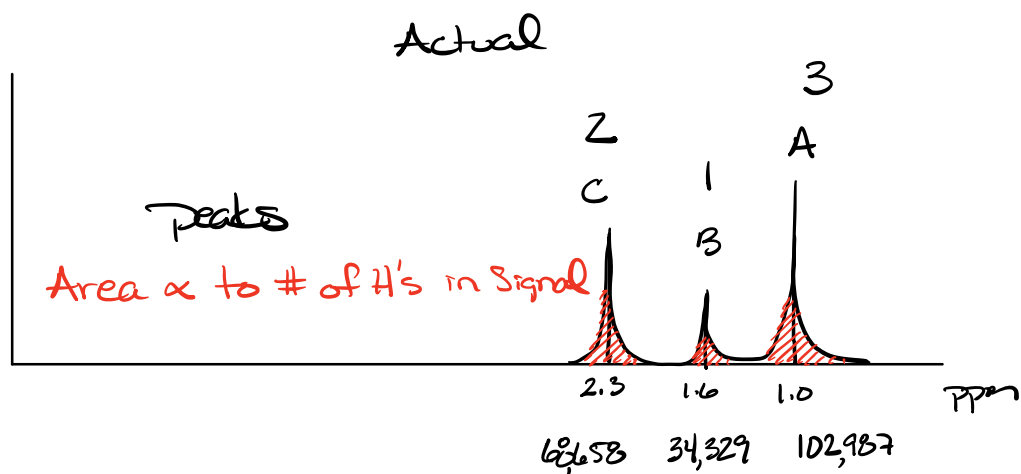
## Integration

<sup>1</sup>H-NMR



Raw integrations are just that, they are raw areas ppm \* Intensity

Raw integrations must be converted into relative Integrations

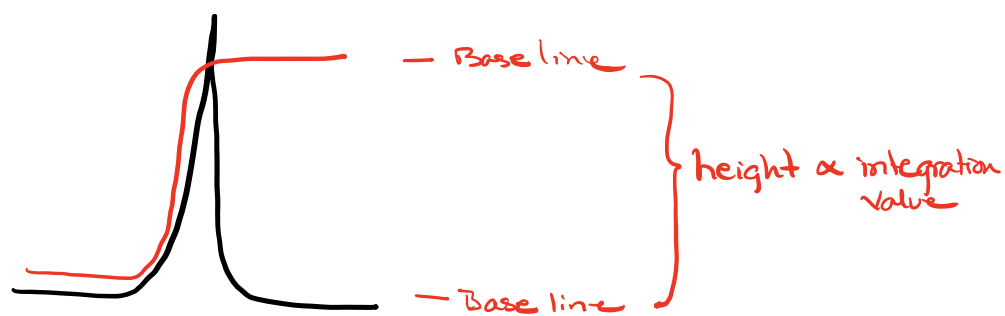
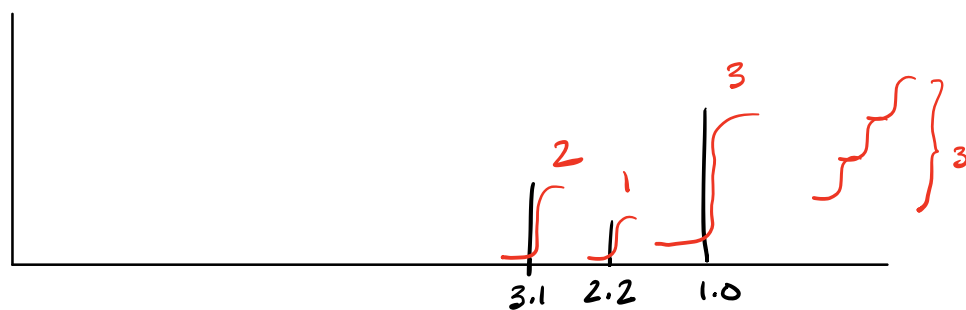


Relative Int

A	$\frac{102,987}{34,329} = 3$	} Ratios it could be
B	$\frac{34,329}{34,329} = 1$	
C	$\frac{68,658}{34,329} = 2$	

3 : 1 : 2  
6 : 2 : 4  
9 : 3 : 6

# ways Integrations are Communicated





Only  $^1\text{H}$ -NMR can be integrated

$^{13}\text{C}$ -NMR cannot be integrated

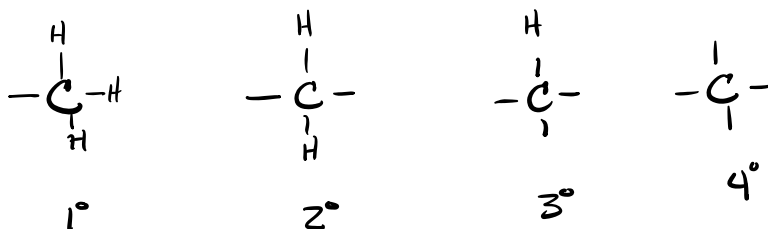
Reason

Protons have fast relaxation times.

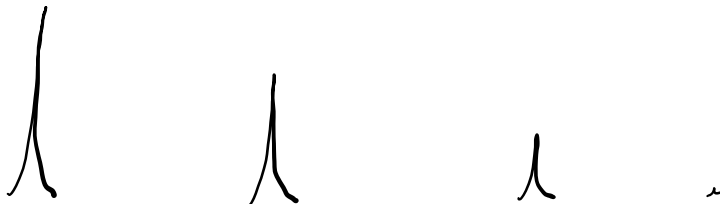
They all relax at similar rate

Size of peak  $\propto$  to # H's giving rise to peak

Carbons don't relax at same rate

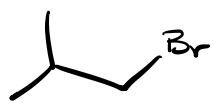
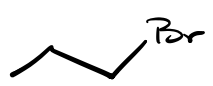


fast  $\leftarrow$  —————  $\rightarrow$  extremely slow



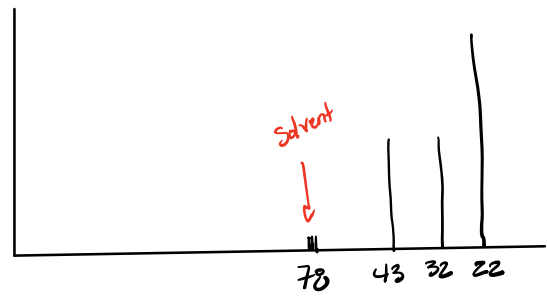
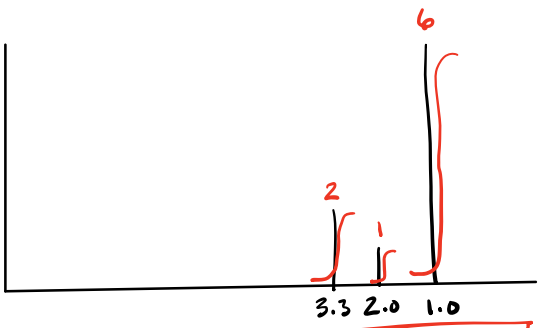
$\uparrow$  read  
only the fastest carbons relax fully

250 MHz NMR w/ CDCl<sub>3</sub> solvent



<sup>1</sup>H-NMR  
Environments = 3

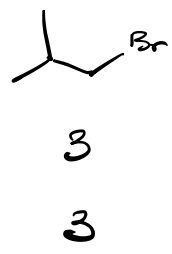
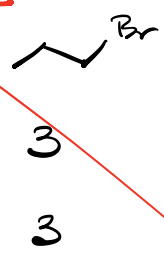
<sup>13</sup>C-NMR  
Environments = 3



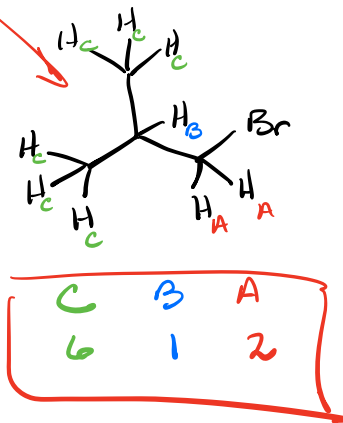
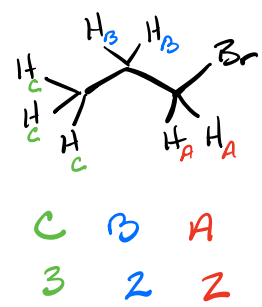
**2:1:6**

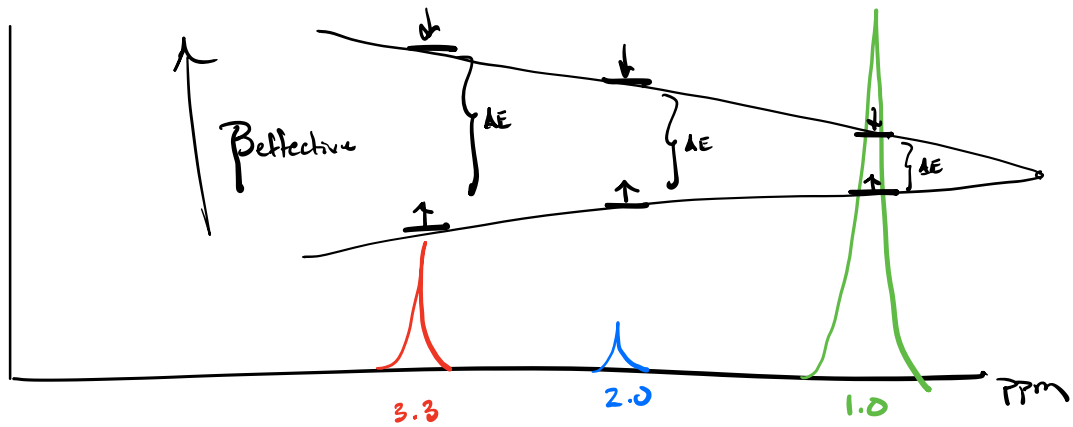
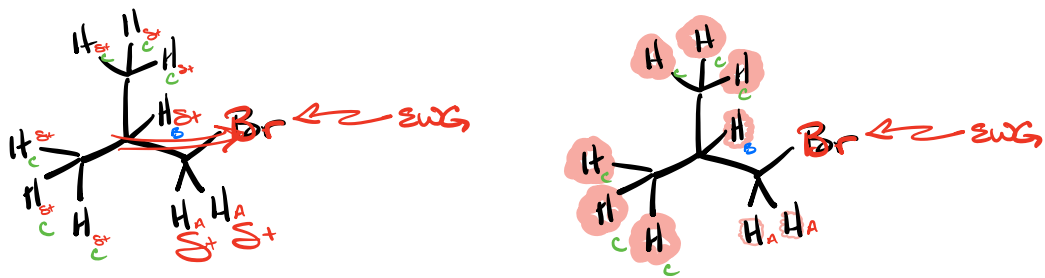
Chemical Environments

H  
C



Ratios





Downfield  
Deshielded

upfield  
Shielded

